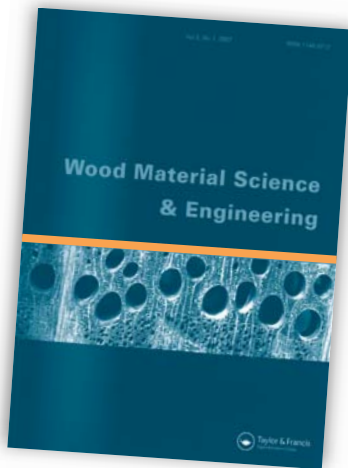


Wood Material Science & Engineering

Re-launch
for 2009

The journal **Wood Material Science and Engineering** aims to serve at the forefront of the wood science and technology field and accepts original articles relevant to:

- Wood material science with emphasis on: water-wood relations, wood durability, wood modification, wood mechanics, wood composites, engineered wood products, and eco-efficient wood based products
- Wood engineering, i.e. the application of the wood material science to the design, building, and use of machines, constructions etc. In this aspect the link between the nature of the wood material and the properties of the final wood products in-service is of outmost importance.



Review papers may also be accepted but the topic should be discussed with the editor before submission.

EDITORIAL BOARD

EDITOR-IN-CHIEF:

Prof. Dick Sandberg,
Växjö University, Sweden

CO-EDITORS:

Dr. Charles Frihart,
USDA Forest Service, Forest
Products Laboratory, USA

Dr. Jimmy Johansson,
Växjö University, Sweden

Dr. Magnus Wälinder,
Technical Research Institute
of Sweden, Sweden

**Supported by
an International
Advisory Board**

Recent or Forthcoming articles

- *Simulated yield and quality distribution of sawn timber from final felling in a Norway spruce (Picea abies [L.] Karst.) stand with varying thinning regimes – a case study*
A. Kantola, T. Song, A. Usenius & A. Heikkilä
- *A new procedure for treating wood*
M. Inoue, K. Adachi, K. Tsunoda, R.M. Rowell & S. Kawai
- *Drying of timber in progressive kilns: Simulation, quality, energy consumption*
J.-G. Salin & T. Wamming
- *Consumer preference for wooden and laminate flooring*
A. Roos & M. Hugosson
- *Varying moisture content and eigen-stresses in timber elements*
M. Häglund

To receive information on forthcoming articles in advance of publication register for our free contents alerting service at: www.informaworld.com/alerting

Submissions

All submissions should be made online at the **Wood Material Science and Engineering** Manuscript Central site, <http://mc.manuscriptcentral.com/swoo>. New users should first create an account.

For full details on how to submit a paper go to www.tandf.co.uk/journals/swoo and click on the 'Instructions for Authors' tab.

To view a free online sample copy, go to:
www.tandf.co.uk/journals/swoo

Order Form

Please enter my subscription to:

Wood Material Science & Engineering

Volume 4, 2009, 4 issues per year, Print ISSN 1748-0272, Online ISSN 1748-0280

Institutional Rate (print and online access) US\$251 £152 €200

Institutional Rate (online only) US\$238 £144 €190

Personal Rate (print only) US\$87 £53 €70

PLEASE SEND MY JOURNALS TO:

NAME (BLOCK CAPITALS)	_____
DEPARTMENT **	_____
INSTITUTION/ COMPANY **	_____
STREET	_____
TOWN	_____
STATE/COUNTY	_____
COUNTRY	_____
POST/ZIP CODE	_____
EMAIL	_____
TELEPHONE	_____

Methods of Payment

Payment enclosed. Cheques or bank drafts should be made payable to **Informa UK Limited** and be drawn on a UK or US bank.

Payment charge Visa MasterCard Eurocard American Express (AMEX - US\$ / £ only) Switch/Delta/Maestro

Card Number _____ Start Date ____/____/____

Issue no. ____ Security Code _____ Expiry Date ____/____/____

Switch/Delta/Maestro users only (Last 3 digits found on reverse of card)

Signature _____ Date ____/____/____

Payment has been made by bank transfer to one of the following accounts (please indicate):

UK - National Westminster Bank Plc, 25 High Street, Colchester, Essex, CO1 1DG, UK • Account Name: Informa UK Ltd.
Account No: 01825550 • Sort Code: 60-06-06 • Swift Code: NWBKGB2L • IBAN: GB25NWBK60060601825550

USA - Bank of America, 100 33rd Street West, New York, 10001 NY, USA • Account Name: Informa UK Ltd.
Account No: 2753109322 • ABA No for Wires: 026009593 • ABA No for ACH: 021000322 • Swift Code: BOFAUS3N

Europe - National Westminster Bank Plc, 25 High Street, Colchester, Essex, CO1 1DG, UK • Account Name: Informa UK Ltd.
Account No: 06880185. • Sort Code: 60-72-11 • Swift Code: NWBKGB2L • IBAN: GB08NWBK60721106880185

Please complete in full the details on the order form and return to:

Taylor & Francis Customer Services,
T&F Informa UK Ltd,
Sheepen Place,
Colchester,
Essex, CO3 3LP, UK
Tel: +44 (0)20 7017 5544
Fax: +44 (0)20 7017 5198
Email: subscriptions@tandf.co.uk

Taylor & Francis Customer Services,
Taylor & Francis Inc,
325 Chestnut Street, 8th Floor, Philadelphia,
PA 19106, USA
Tel: +1 800 354 1420 (toll-free calls from within
the US) or +1 215 625 8900 (calls from overseas)
Fax: +1 215 625 8914
Email: customerservice@taylorandfrancis.com

Taylor & Francis Customer Services,
Taylor & Francis Asia Pacific,
240 MacPherson Road,
#08-01 Pines Industrial Building,
Singapore 348574
Tel: +65 6741 5166
Fax: +65 6742 9356
Email: info@tandf.com.sg

ONLINE:
www.tandf.co.uk/journals

**OR HAND THE ORDER FORM
TO YOUR LIBRARIAN WITH
A RECOMMENDATION
TO SUBSCRIBE**

Please note: personal rate subscribers must pay by personal cheque or credit card.

Subscription rates include postage/air speeded delivery. £ Sterling rates apply to orders from the UK and the Republic of Ireland. Euro rates apply to orders from the rest of Europe. US\$ rates apply to orders from all other parts of the world. If you are unsure which rate applies to you please contact Customer Services in the UK.

To request an online sample copy of **Wood Material Science and Engineering**, please visit our website at: www.tandf.co.uk/journals/swoo

To the Librarian

Please include this Journal in your next serials review meeting with my recommendation to subscribe:

From _____

Dept _____

Date _____

Please note this Taylor & Francis Journal offers either print & online or online only subscriptions for institutions.

** Please complete this information only if you are taking out an institutional subscription. Register your email address at www.tandf.co.uk/eupdates to receive information on books, journals and other news within your areas of interest.

To find out more about our journals visit www.tandf.co.uk/journals

For further information or to subscribe, please contact:

T&F Order Processing,
T&F Informa UK Ltd,
Sheepen Place,
Colchester, Essex
CO3 3LP

Telephone: +44(0)20 7017 5544
Fax: +44(0)20 7017 5198
Email: tf.processing@informa.com

INSTITUTIONAL SUBSCRIBERS

Value Added Tax is applicable for Institutional Subscriptions.

Subscribers who take both print and online copies of their journals who are not registered for VAT will need to add VAT to their payments.

Please supply your VAT registration number to avoid these charges.

Subscribers who are registered for VAT in the EU are urged to supply their full VAT registration number online at www.tandf.co.uk/journals/euvat.asp

VAT Registration Number

The personal details provided by you will be held on a database and may be shared with companies in the Informa Group in the UK and internationally. Sometimes your details may be obtained from or shared with external companies for marketing purposes. If you do not wish your details to be used for this purpose or wish your name to be removed from the database, please contact the Database Manager at Informa UK Ltd, Informa House, 30-32 Mortimer Street, London W1W 7RE, UK. Tel: +44 (0)20 7017 4555, Fax: +44 (0)20 7017 4743, Email: database@informa.com

Taylor & Francis Online Services

Alerting services

To receive the table of contents for **Wood Material Science & Engineering** visit the journal homepage at www.tandf.co.uk/journals/swoo

To sign up for other table of contents, new publication and citation alerting services from informaworld visit: www.informaworld.com/alerting

Online Access

Online access is included with a print institutional subscription to the Journal or alternatively is available as an online only option. For further information connect to: www.tandf.co.uk/journals/online.asp

Online Sample Copies

A fully searchable sample copy of this journal is available by visiting: www.tandf.co.uk/journals/swoo

Librarians' Area

Visit our web resource for librarians and information professionals at: www.tandf.co.uk/libsite



Register your email address at www.tandf.co.uk/eupdates to receive information on books, journals and other news within your areas of interest.



An international active reference linking service. Visit www.crossref.org for more information.



Brochure Number
UC280010

Journal Code
SU0009



Taylor & Francis
Taylor & Francis Group