

# FOREST PRODUCTS RESEARCH INSTITUTE

# HISTORY

- **Originally formed as the Centre for Timber Engineering**
- **Has outgrown its original remit**
- **Now the Forest Products Research Institute**

---

# STRUCTURE

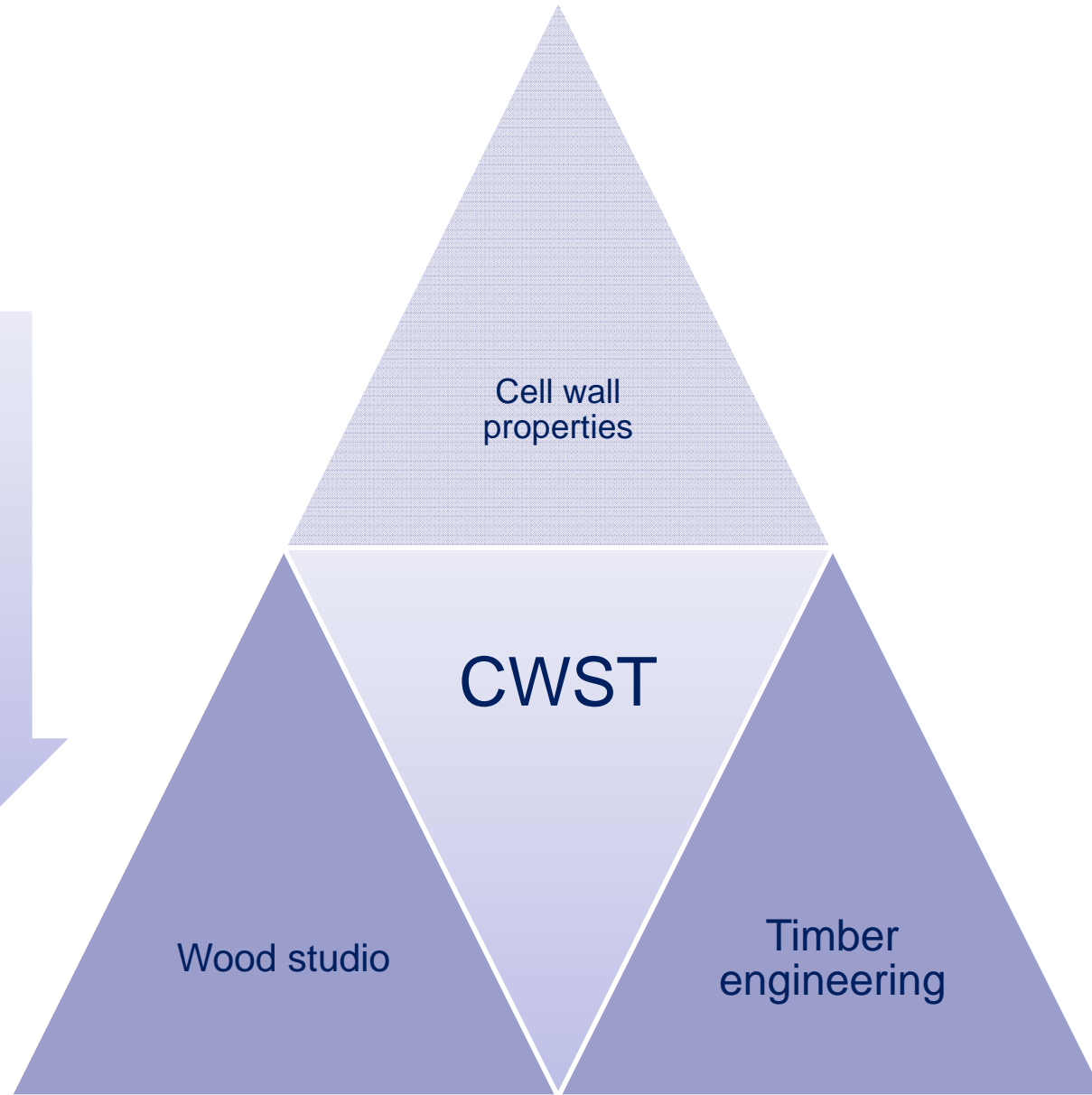
- **Centre for plant science and biopolymer research**
- **Centre for wood science and technology**
- **Centre for timber engineering**
- **Wood studio**

nm

mm

cm

m



Cell wall  
properties

CWST

Wood studio

Timber  
engineering

# Centre for Wood Science and Technology

Callum Hill

Appointed ERP Chair of Materials at Edinburgh Napier University

# Mission

**USING OUR FUNDAMENTAL KNOWLEDGE OF  
WOOD BEHAVIOUR TO IMPROVE ITS PROPERTIES**

**Dimensional stability, drying, mechanosorptive  
behaviour**

**Strength, stiffness, toughness**

**Weathering performance**

**Coatings, adhesives**

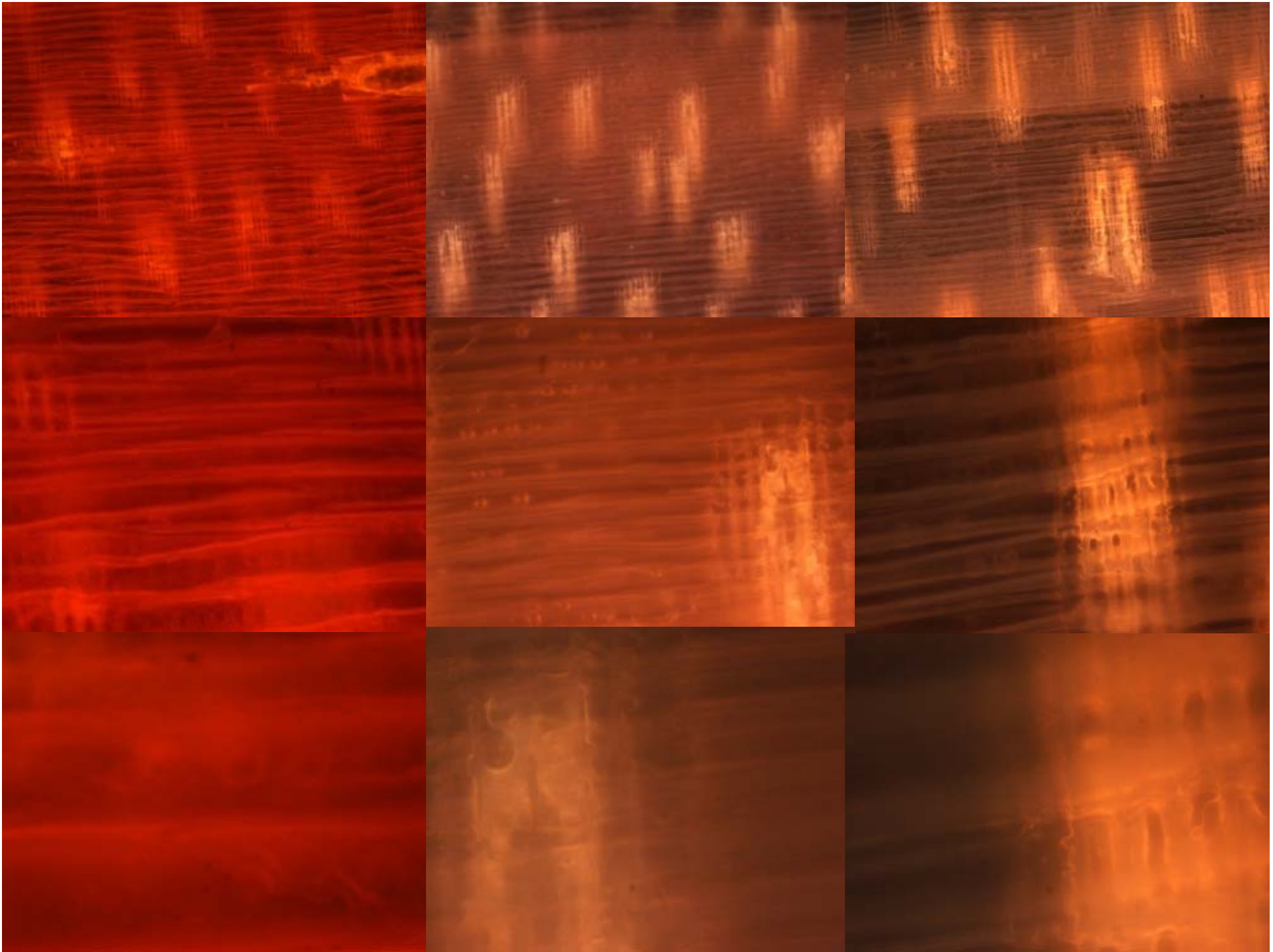
**We also do natural fibres!**

## Centre for Wood Science and Engineering

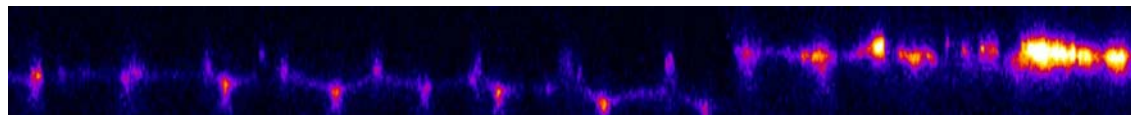
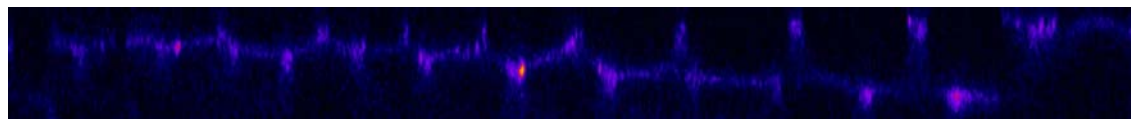
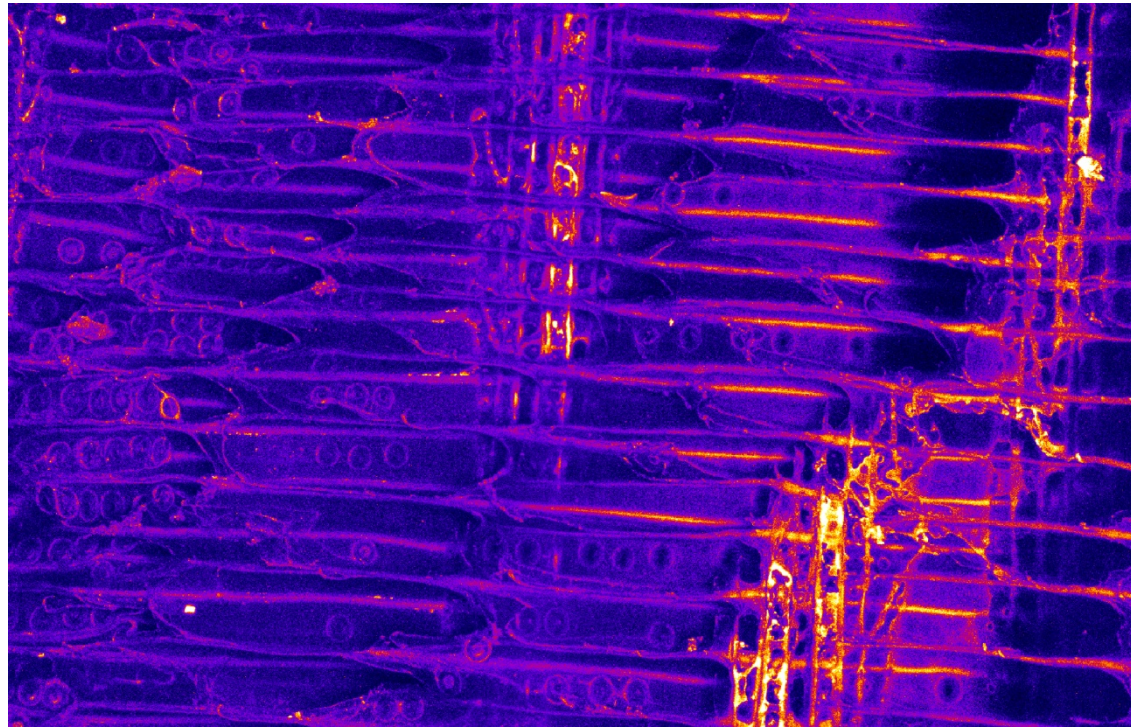
- **Turnover for the year 2009/10 £400k**
- **Plan is to grown this by 10% per annum over 5 years**

## Projects

- **TIMBER PROPERTIES (SIRT)**
- **WOOD MODIFICATION**
- **WOOD WEATHERING**
- **NATURAL FIBRES (INSULATION AND COMPOSITES)**
- **WATER SORPTION AND CELL WALL MICROMECHANICS**
- **COMMERCIALISATION OF RESEARCH THROUGH ERDF PROJECT LINKED TO FOREST RESEARCH**







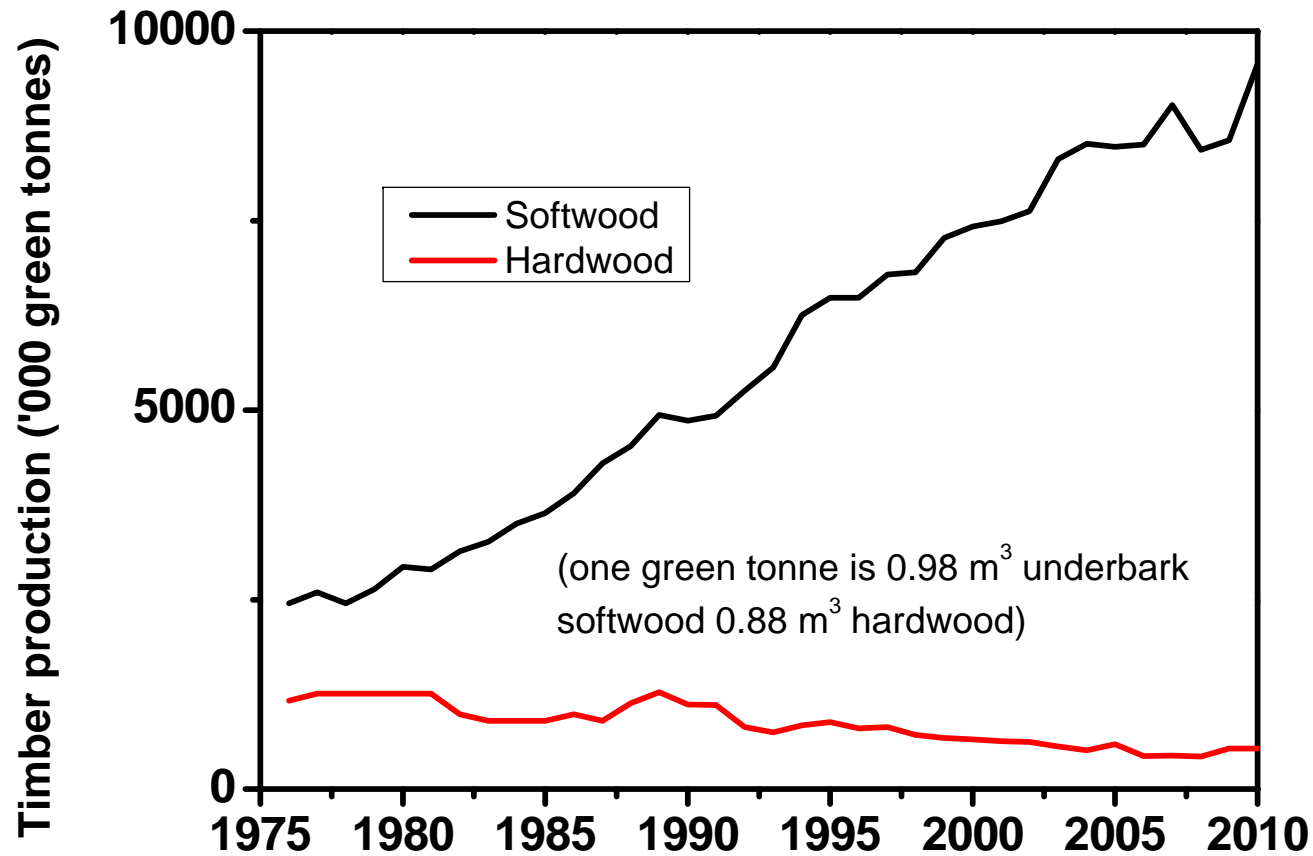
Grey scale values

# The SIRT Project



- **Aim is to improve the utilisation of UK-grown timber**
  - Obtain better knowledge of current resource and the relationship to end-product quality
  - Ensure product performance meets end-user requirements
  - Improve future tree stocks and forest management practices
- **Collaborative project between Edinburgh Napier University, University of Glasgow and Forest Research**
- **An integrated research capability in the fields of wood properties and timber engineering**
  - Undertake long-term fundamental research
  - Immediate response to industry concerns

# UK Timber Production (source Forestry Commission)



# Scottish production

